



N3838U-XNx8 Series High Power UVC LED

Introduction

The N3838U-XNx8 Series LED from TSLC brings industry leading technology to the UVC lighting market with its high reliability and performance. With an AlN substrate and a 80/50/30 degree viewing angle primary optic, the N3838U-XNx8 is ideal for all UV curing and general UVC applications.

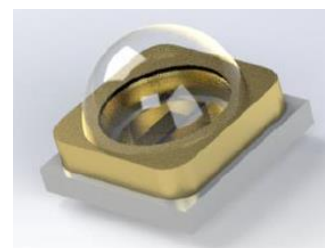


Table of Contents

Characteristics	1
Mechanical Dimensions	3
Recommended Solder Pad Design.....	5
Relative Spectral Power Distribution.....	6
Typical Spatial Radiation Pattern.....	6
Typical Forward L-I Characteristics.....	8
Typical Forward I-V Characteristics.....	8
Recommended Soldering Profile	9
Packing Information.....	10

Characteristics

Absolute Maximum Ratings (T_j=25°C)

Parameter	Rating
	N3838U-XNx8 Series
DC Forward Current (mA)	500 mA
LED Junction Temperature	100°C
LED Operating Temperature	-40°C~85°C
Storage Temperature	-40°C~100°C
Soldering Temperature	Max. 260°C / Max. 10sec. (JEDEC 020)
ESD Sensitivity	5,000 V HBM (JESD-22A-114-B)
Reverse Voltage	Not designed to be driven in reverse bias (VR ≤ 5V)
Preconditioning	Acc. to JEDEC Level 5a

General Characteristics at 350mA

Part number	Color	Peak Wavelength λp		2θ _{1/2}	Temperature Coefficient of Vf (mV/°C)	Thermal Resistance Junction to Pad (°C/W)
		Min	Max		ΔVF / ΔTJ	RO _{J-L}
N3838U-XNM8	VA2	270	280	80	-2~-4	8.4
N3838U-XNI8	VA2	270	280	50	-2~-4	8.4
N3838U-XNE8	VA2	270	280	30	-2~-4	8.4

Notes:

1. The peak wavelength is measured with an accuracy of ±1nm
2. All values stated are subject to the limits and set up of TSLC's testers. All other measurement data are defined as long-term production mean values and are only given for reference.
3. A critical component is a component used in a life-support device or system whose failure can reasonably be expected to cause the failure of that life-support device or system, or to affect its safety or effectiveness of that device or system. Life support devices or systems are intended (i) to be implanted in the human body, or (ii) to support and/or maintain and sustain human life. If they fail, it is reasonable to assume that the health of the user may be endangered. Components used as a critical component must be approved in writing by TSLC.
4. These devices emit high intensity UV/NUV light. Necessary precautions must be taken during operation. Do not look directly into the light or look through the optical system when in operation. Protective eyewear should be worn at all times during operation.
5. Do not drive at rated current for more than 5 seconds without proper thermal management.
6. Always follow thermal design recommendations in the relevant Application Note.
7. Lens discoloration may occur with prolonged exposure to UN/NUV light. Additional lens material will need to be tested for UN/NUV light compatibility and durability.

Radiometric Power and Forward Voltage ($T_j=25^{\circ}\text{C}$)

Part number	Color	Performance at Test Current (350mA)			
		Group	Radiometric Power (mW)		VF(V)
			Min	Max	Typ.
N3838U-XNM8 (beam angle 80°)	VA2 (270-280nm)	NB2	70	85	6
		NB3	85	100	6
		NC1	100	120	6
N3838U-XNI8 (beam angle 50°)	VA2 (270-280nm)	NB2	70	85	6
		NB3	85	100	6
		NC1	100	120	6
N3838U-XNE8 (beam angle 30°)	VA2 (270-280nm)	NB2	70	85	6
		NB3	85	100	6
		NC1	100	120	6

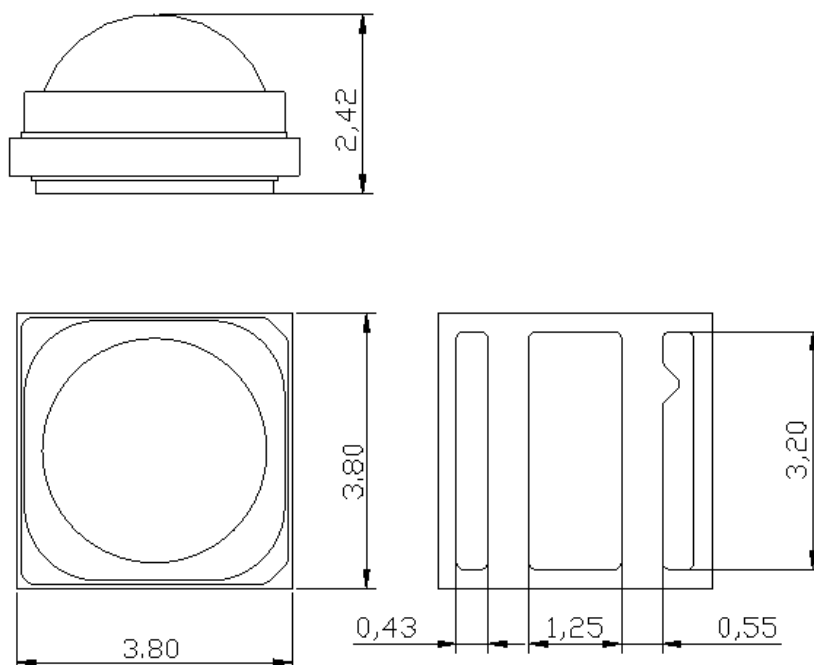
Note:

1. Radiometric power is measured with an accuracy of $\pm 10\%$
2. The forward voltage is measured with an accuracy of $\pm 0.2\text{V}$

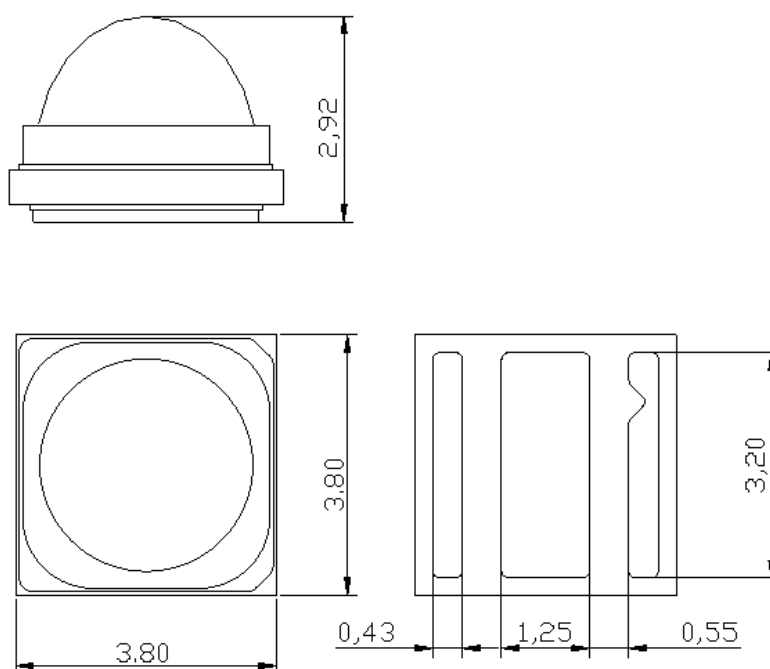
* Calculated values are for reference only.

Mechanical Dimensions

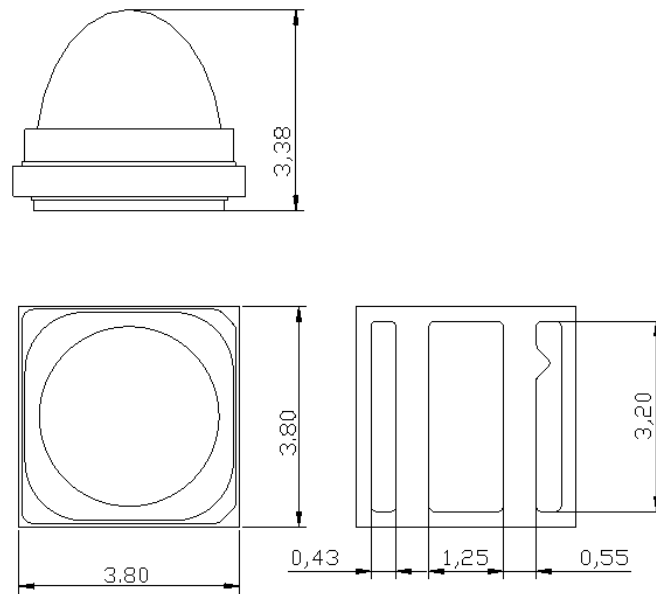
N3838U-XNM8 (beam angle 80°) (unit mm)



N3838U-XNI8 (beam angle 50°) (unit mm)



N3838U-XNE8 (beam angle 30°) (unit mm)

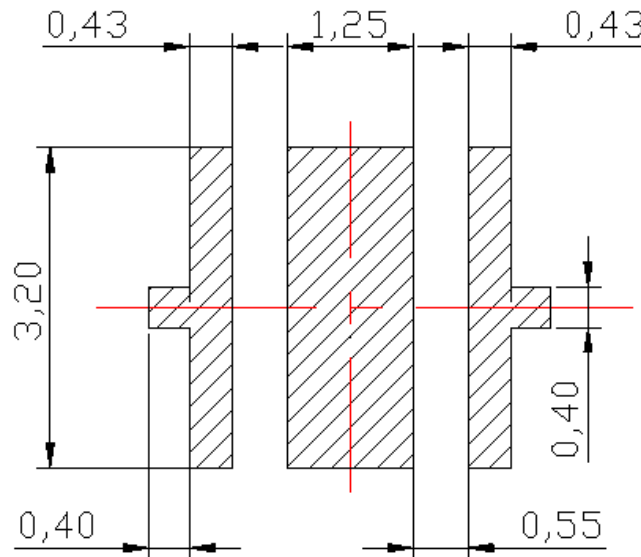


Notes:

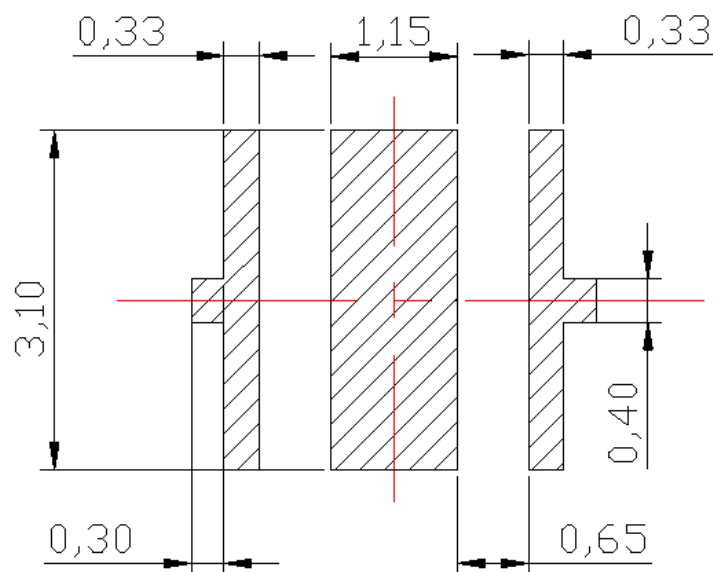
1. Drawing is not to scale
2. All dimensions are in millimetre
3. Dimensions are $\pm 0.13\text{mm}$ unless otherwise indicated

Recommended Solder Pad Design

Recommended Soldering Pad Design



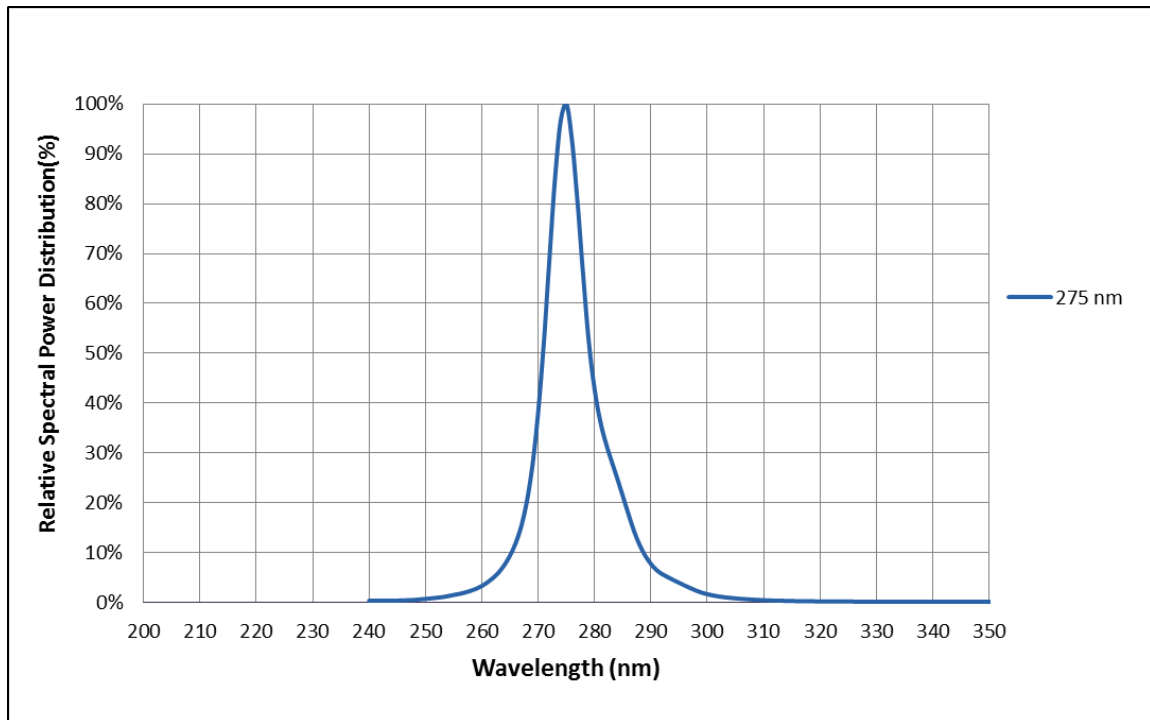
Recommended Stencil Pattern Design (Marked Area is Opening)



Notes:

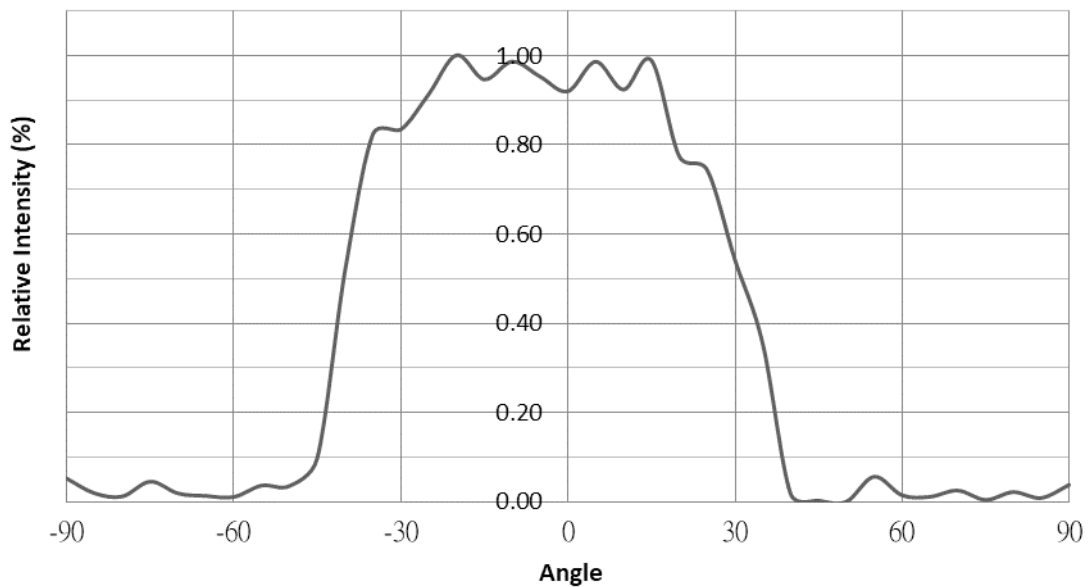
1. Drawing is not to scale
2. All dimensions are in millimeter

Relative Spectral Power Distribution, $T_j=25^{\circ}\text{C}$

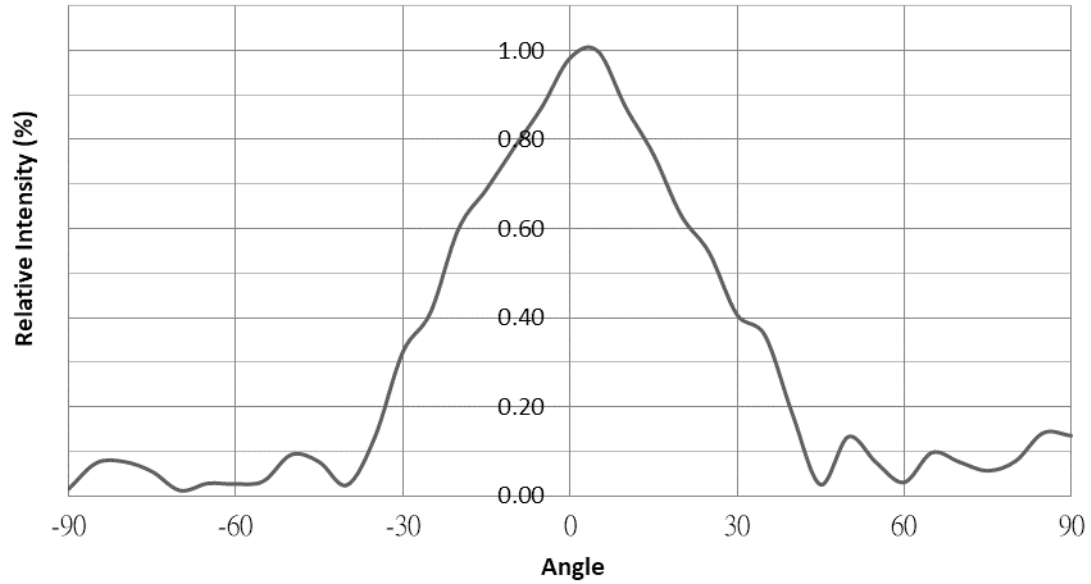


Typical Spatial Radiation Pattern, $T_j=25^{\circ}\text{C}$

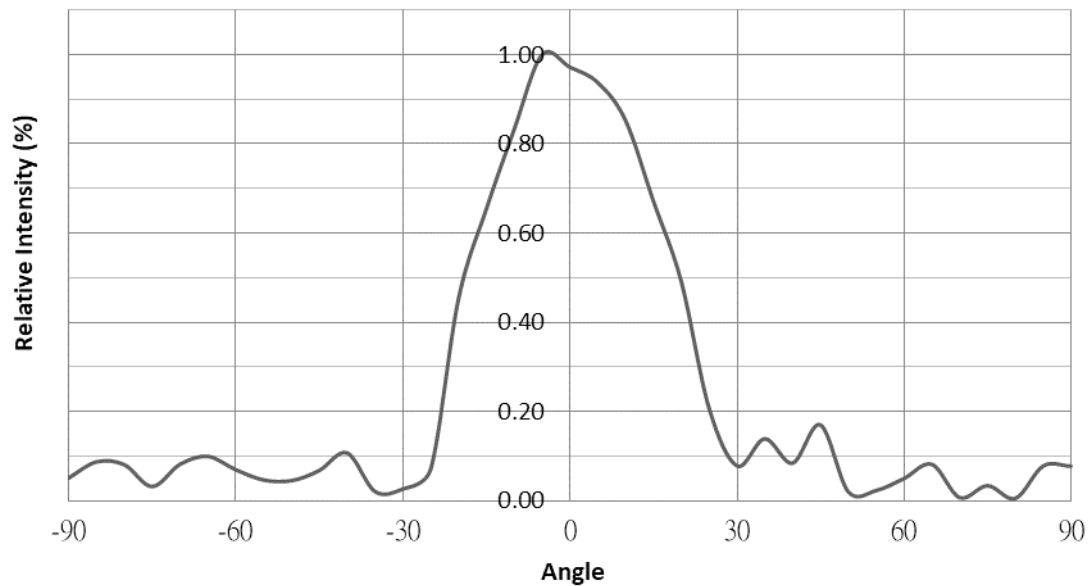
N3838U-XNM8 (beam angle 80°)



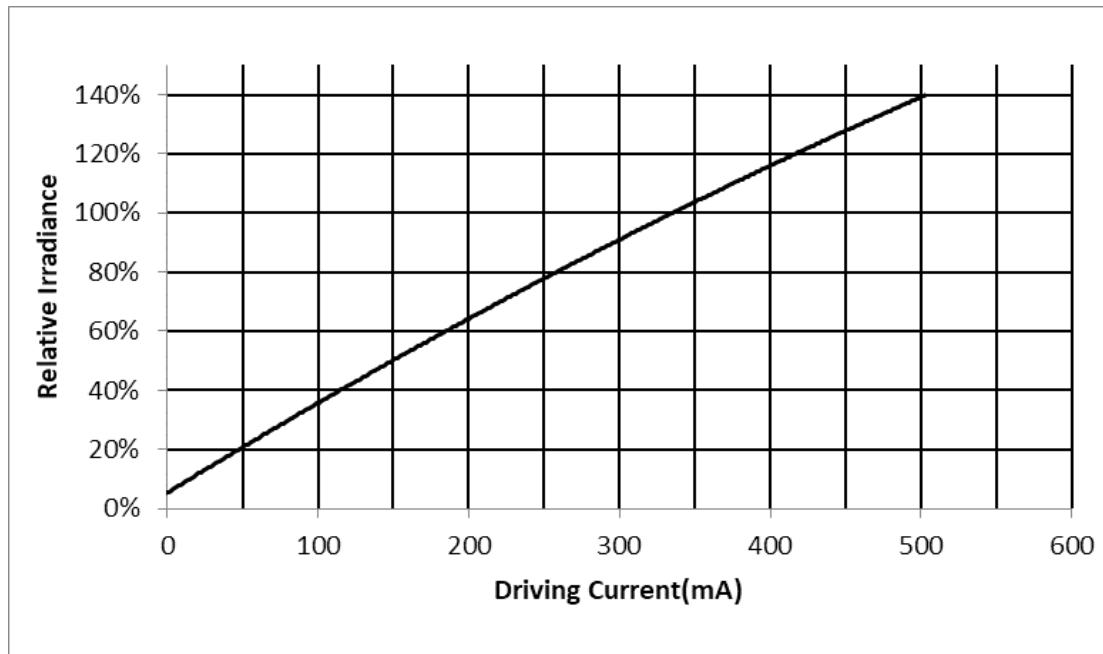
N3838U-XNI8 (beam angle 50°)



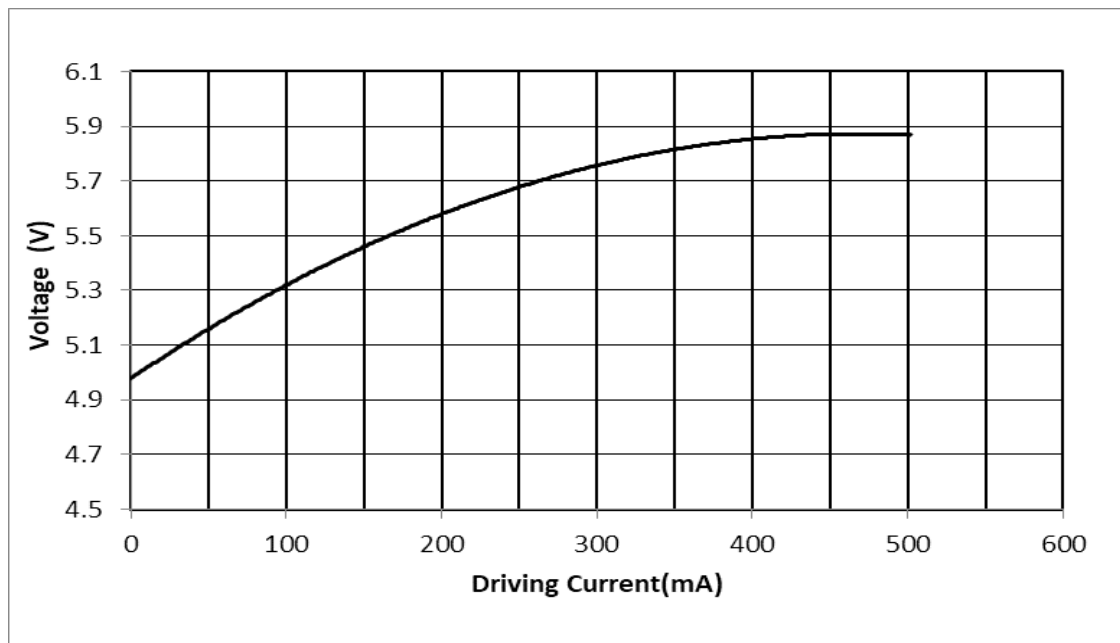
N3838U-XNE8 (beam angle 30°)



Typical Forward L-I Characteristics, $T_j=25^{\circ}\text{C}$

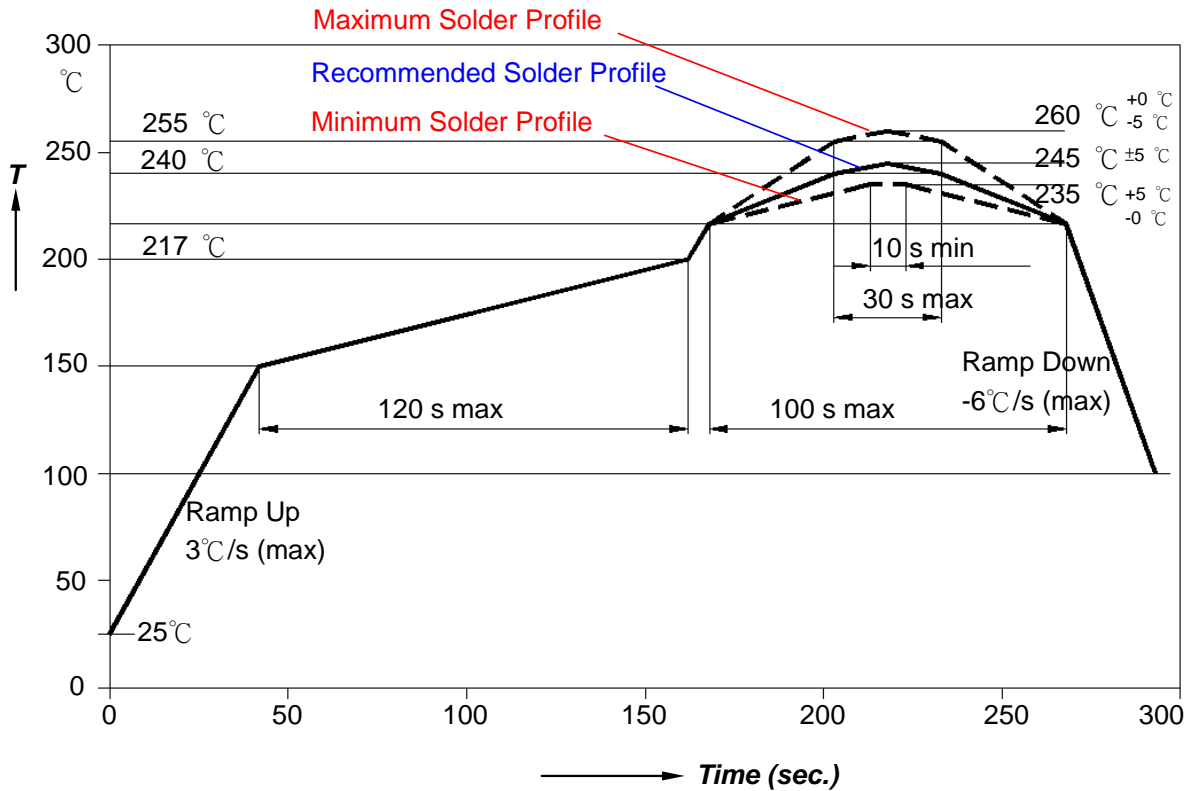


Typical Forward I-V Characteristics, $T_j=25^{\circ}\text{C}$



Recommended Soldering Profile

The LEDs can be soldered using the parameters listed below. As a general guideline, the users are suggested to follow the recommended soldering profile provided by the manufacturer of the solder paste. Although the recommended soldering conditions are specified in the list, reflow soldering at the lowest possible temperature is advised for the LEDs.

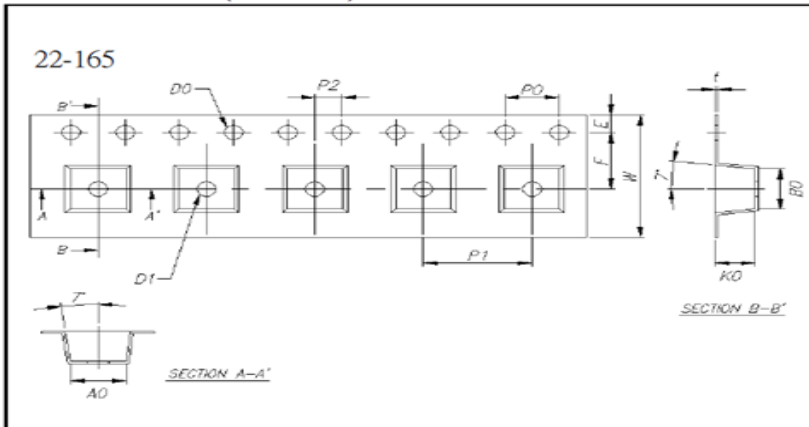


Profile Feature	Sn-Pb Eutectic Assembly	Pb-Free Assembly
Average Ramp-up Rate (Ts _{max} to Tp)	3°C/second max.	3°C/second max.
Preheat		
- Temperature Min(Ts _{min})	100°C	150°C
- Temperature Max(Ts _{max})	150°C	200°C
- Time(ts _{min} to ts _{max})	60-120 seconds	60-180 seconds
Time maintained above:		
- Temperature(T _L)	183°C	217°C
- Time(t _L)	60-150 seconds	60-150 seconds
Peak/classification Temperature(Tp)	215°C	260°C
Time within 5°C of actual Peak Temperature(tp)	10-30 seconds	20-40 seconds
Ramp-Down Rate	6°C/second max.	6°C/second max.
Time 25°C to Peak Temperature	6 minutes max.	8 minutes max.

Packing Information

N3838U-XNM8 series (beam angle 80°), Max QTY: 500ea / roll

Dimensions. (Unit: mm)

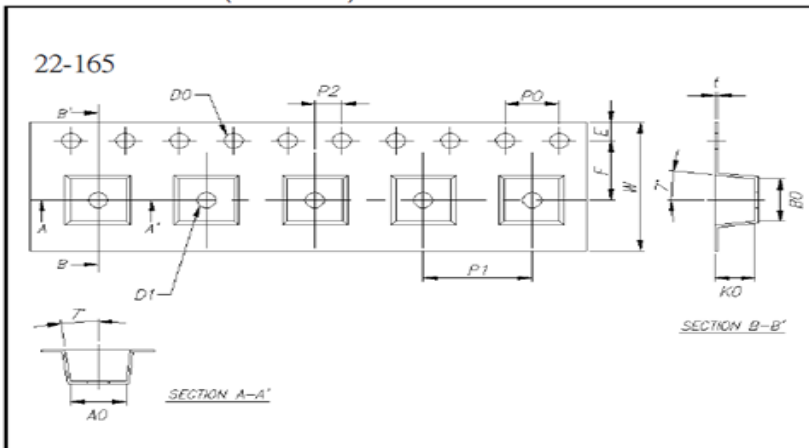


Item	Specification	Tol. (+/-)
W	12.00	± 0.30
E	1.75	± 0.10
F	5.50	± 0.10
D0	1.50	+0.10,-0
D1	1.50	± 0.10
P0	4.00	± 0.10
P1	8.00	± 0.10
P2	2.00	± 0.10
P0 x 10	40.00	± 0.20

t	0.23	± 0.05
A0	4.09	± 0.10
B0	3.93	± 0.10
K0	2.95	± 0.10

N3838U-XNI8 series (beam angle 50°), Max QTY: 500ea / roll

Dimensions. (Unit: mm)

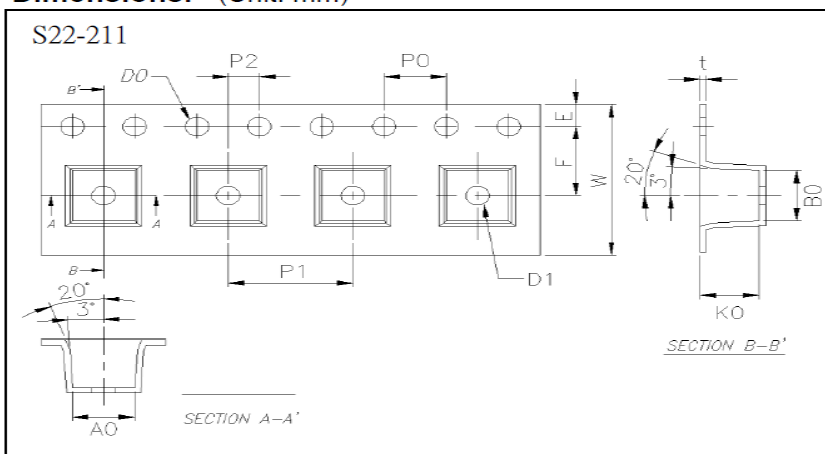


Item	Specification	Tol. (+/-)
W	12.00	± 0.30
E	1.75	± 0.10
F	5.50	± 0.10
D0	1.50	+0.10,-0
D1	1.50	± 0.10
P0	4.00	± 0.10
P1	8.00	± 0.10
P2	2.00	± 0.10
P0 x 10	40.00	± 0.20

t	0.23	± 0.05
A0	4.09	± 0.10
B0	3.93	± 0.10
K0	2.95	± 0.10

N3838U-XNE8 series (beam angle 30°), Max QTY: 500ea / roll

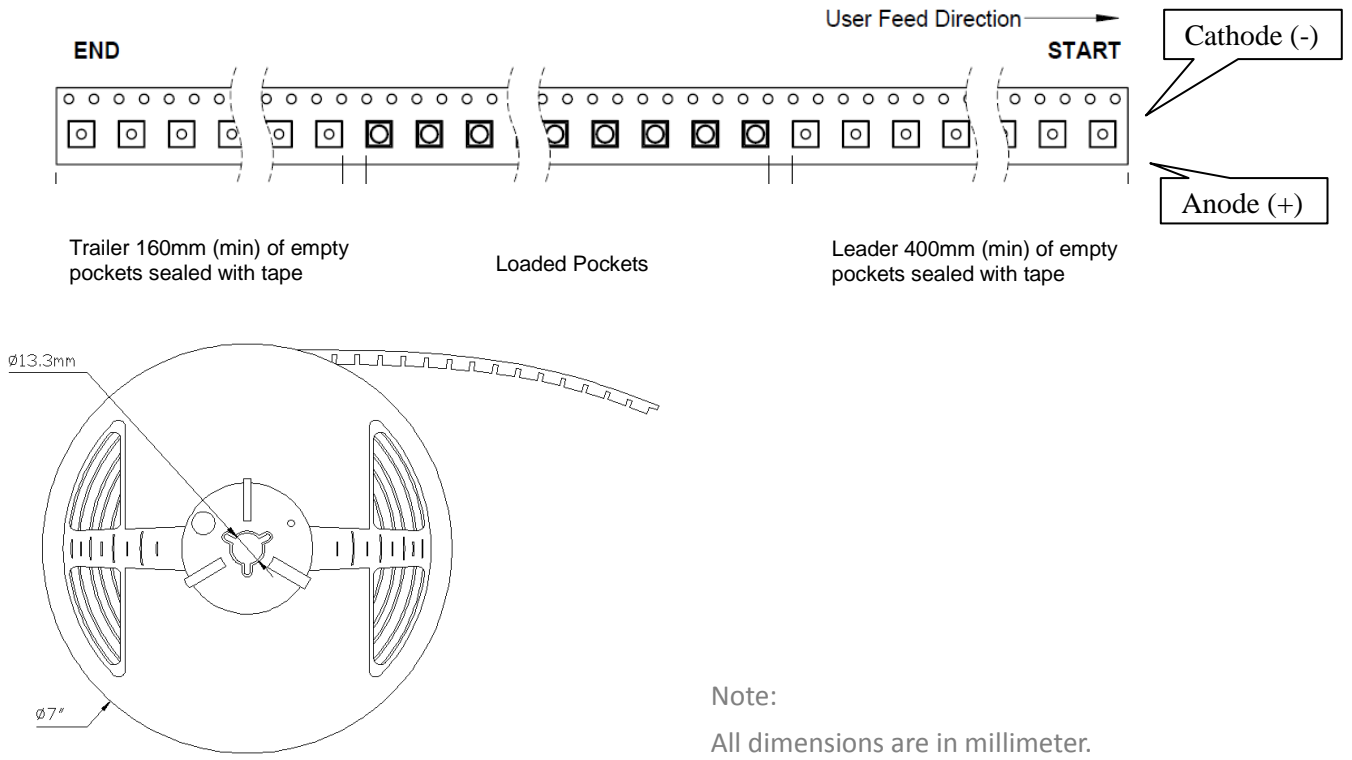
Dimensions. (Unit: mm)



Item	Specification	Tol. (+/-)
W	12.00	± 0.30
E	1.75	± 0.10
F	5.50	± 0.10
D0	1.50	+0.10, -0
D1	1.50	+0.10, -0
P0	4.00	± 0.10
P1	8.00	± 0.10
P2	2.00	± 0.10
P0 x 10	40.00	± 0.20

t	0.40	± 0.05
A0	4.00	± 0.10
B0	4.00	± 0.10
K0	3.80	± 0.10

N3838U-XNx8 Series Preliminary Product Datasheet



About Us

TSLC Corporation is devoted to developing high-density, and multi-size emitters with powerful output to satisfy the needs of every customer.

TSLC Corporation is the leader in LED solutions. Unlimited design flexibility for interior and exterior spaces with high-end lighting effect; energy-efficient for UV curing to improve the quality of medical care; horticulture solutions create a better environment for everyone; high-intensity rotatable lightings for the entertainment industry, TSLC is always there for your lighting needs.

For further company or product information, please visit us at www.tslc.com.tw or please contact sales@tslc.com.tw.



www.tslc.com.tw

ASIA PACIFIC

1F, No. 11, Ke Jung Rd.

Chu-Nan Site

Hsinchu Science Park

Chu-Nan 350, Miao-Li City

Taiwan, ROC

Tel: +886-37-587098

Fax: +886-37-587099

sales@tslc.com.tw

